

«enumeration» Substance
NH3 NOX NO2 PM10 PM25 EC

«enumeration» TimeUnit
HOUR DAY MONTH YEAR

«enumeration» ResultType
DEPOSITION CONCENTRATION EXCEEDANCE_DAYS EXCEEDANCE_HOURS

«enumeration» CalculationType
PERMIT NATURE_AREA RADIUS CUSTOM_POINTS

«enumeration» StandardVehicleType
LIGHT_TRAFFIC NORMAL_FREIGHT HEAVY_FREIGHT AUTO_BUS

«enumeration» RoadSideBarrierType
SCREEN WALL

«enumeration» RoadElevation
NORMAL NORMAL_DYKE STEEP_DYKE VIADUCT TUNNEL

«enumeration» MaritimeShippingMovementType
INLAND MARITIME

«enumeration» OutflowDirectionType
VERTICAL HORIZONTAL

«enumeration» RejectionGrounds
NONE COMPLIANCE_CRITERION EXPOSURE_CRITERION OTHER

«enumeration» MonitorSubstance
NONE PM10_ONLY ALL

«enumeration» WaterwayDirectionType
IRRELEVANT UPSTREAM DOWNSTREAM

«enumeration» InlandRouteDirectionType
ARRIVE DEPART

«enumeration» TreeProfile
NONE_OR_FEW SEPARATED PACKED

«enumeration» SpeedProfile
URBAN_TRAFFIC_STAGNATING URBAN_TRAFFIC_NORMAL URBAN_TRAFFIC_FREE_FLOW NON_URBAN_TRAFFIC

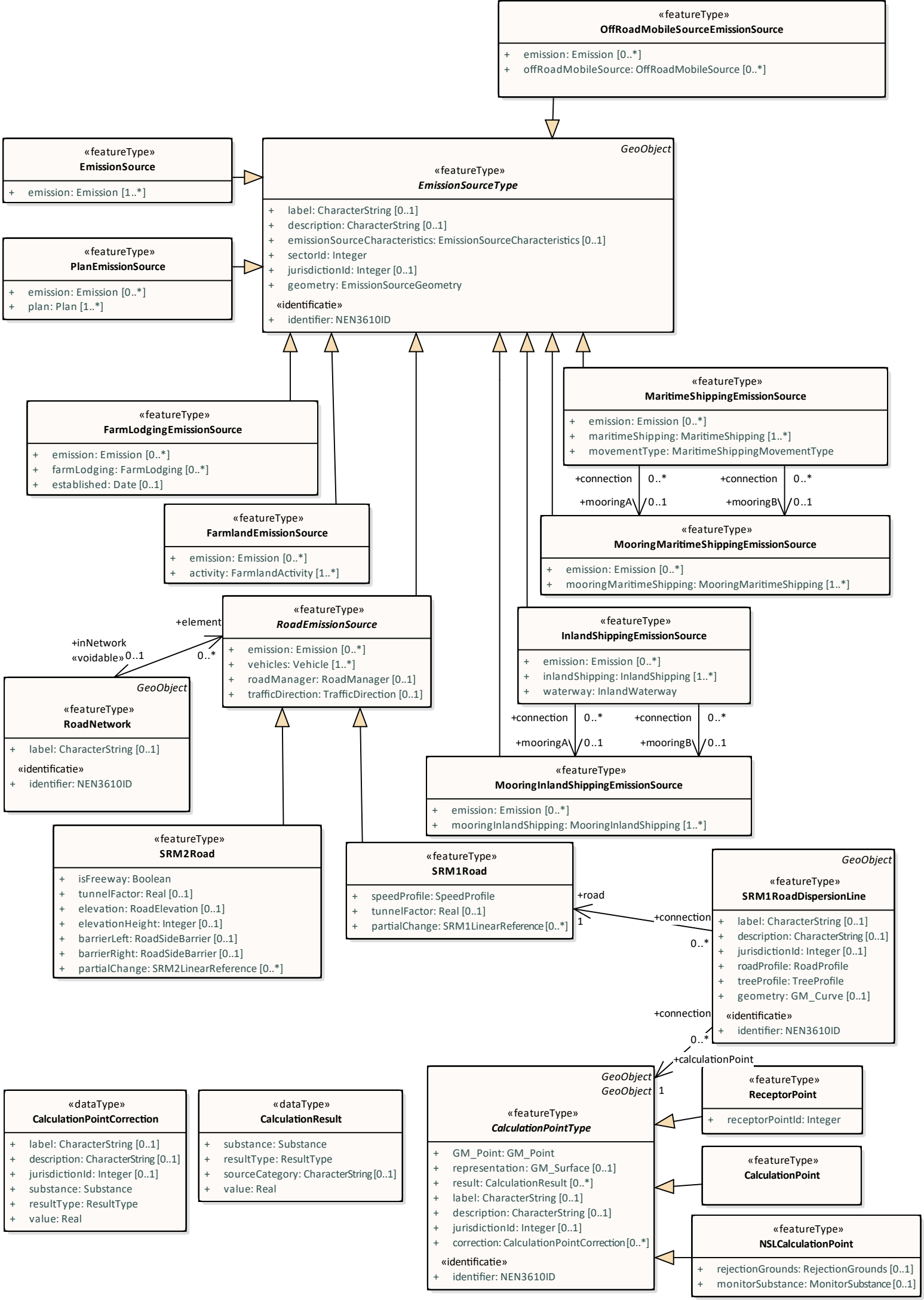
«enumeration» RoadProfile
WIDE_STREET_CANYON NARROW_STREET_CANYON ONE_SIDE_BUILDINGS OTHER

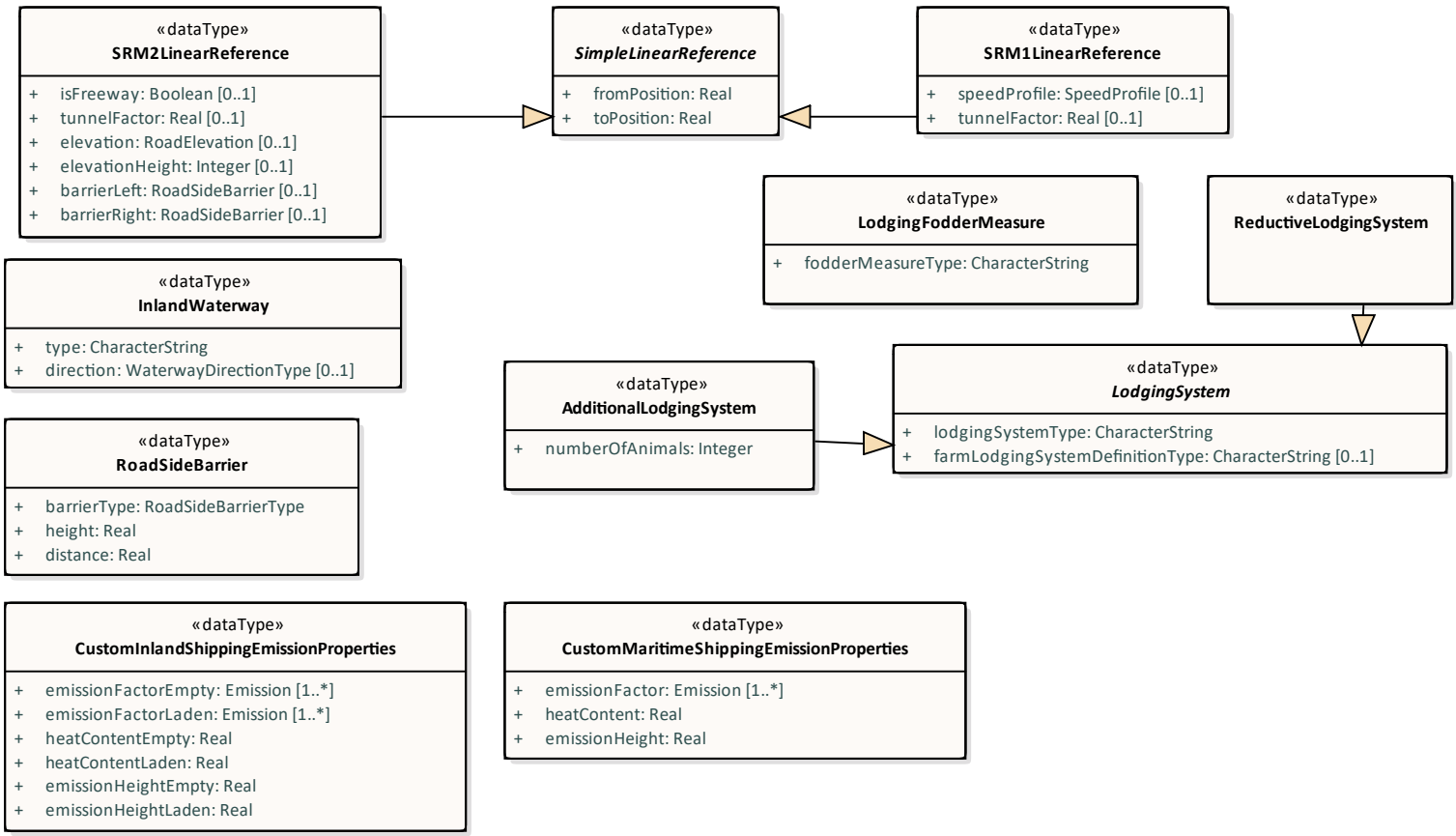
«enumeration» RoadManager
MUNICIPALITY PROVINCE STATE WATER_AUTHORITY PRIVATE

«enumeration» SituationType
REFERENCE PROPOSED TEMPORARY NETTING

«enumeration» TrafficDirection
BOTH A_TO_B B_TO_A

«enumeration» OutflowVelocityType
ACTUAL_FLOW NORMALISED_FLOW





«dataType»
SRM2LinearReference

- + isFreeway: Boolean [0..1]
- + tunnelFactor: Real [0..1]
- + elevation: RoadElevation [0..1]
- + elevationHeight: Integer [0..1]
- + barrierLeft: RoadSideBarrier [0..1]
- + barrierRight: RoadSideBarrier [0..1]

«dataType»
SimpleLinearReference

- + fromPosition: Real
- + toPosition: Real

«dataType»
SRM1LinearReference

- + speedProfile: SpeedProfile [0..1]
- + tunnelFactor: Real [0..1]

«dataType»
LodgingFodderMeasure

- + fodderMeasureType: CharacterString

«dataType»
ReductiveLodgingSystem

«dataType»
InlandWaterway

- + type: CharacterString
- + direction: WaterwayDirectionType [0..1]

«dataType»
RoadSideBarrier

- + barrierType: RoadSideBarrierType
- + height: Real
- + distance: Real

«dataType»
AdditionalLodgingSystem

- + numberOfAnimals: Integer

«dataType»
LodgingSystem

- + lodgingSystemType: CharacterString
- + farmLodgingSystemDefinitionType: CharacterString [0..1]

«dataType»
CustomInlandShippingEmissionProperties

- + emissionFactorEmpty: Emission [1..*]
- + emissionFactorLaden: Emission [1..*]
- + heatContentEmpty: Real
- + heatContentLaden: Real
- + emissionHeightEmpty: Real
- + emissionHeightLaden: Real

«dataType»
CustomMaritimeShippingEmissionProperties

- + emissionFactor: Emission [1..*]
- + heatContent: Real
- + emissionHeight: Real

